

LINK SETTING FOR MIDLAND G9

Fig 1

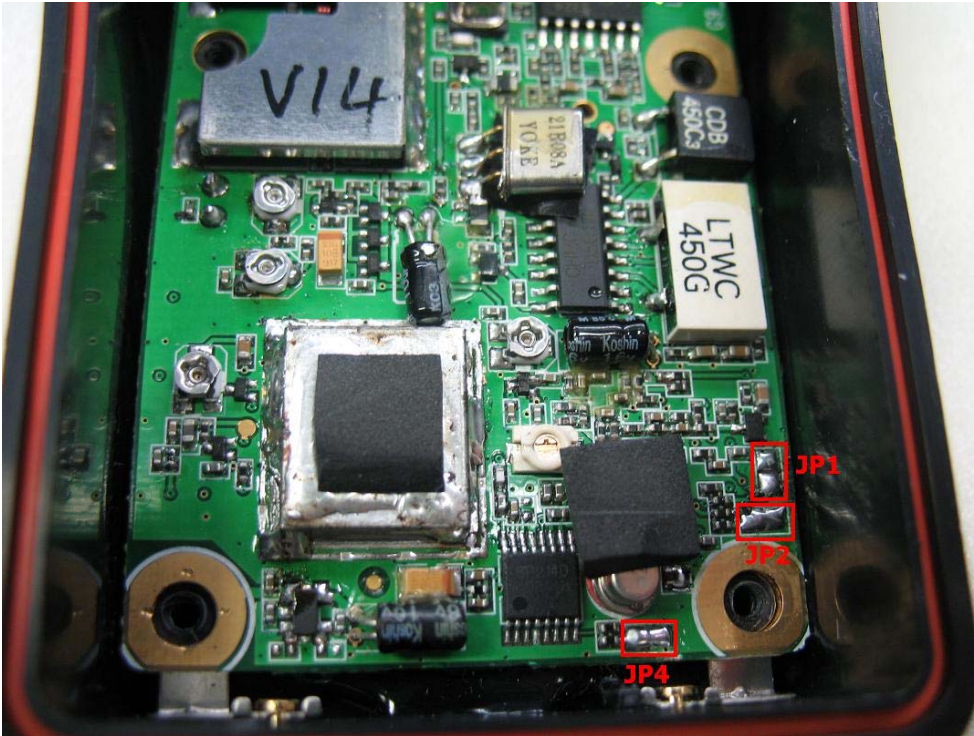
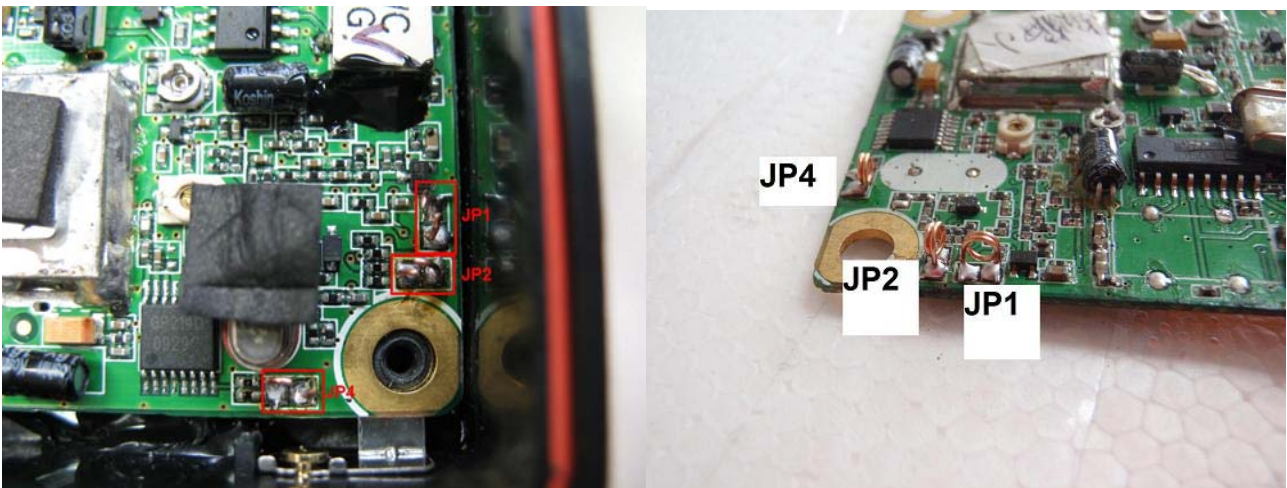


Fig 2



If you have the radios as configuration Fig 2, make more attention when you cut the jumper, verify and remove the part in excess of coil's, otherwise whether the one remain inside the radios, can bring about a short-circuit. If you want soldering the jumpers again, you make it in the base of pcb and whether necessary remove all coil's.

- Open the radio and follow below table for link setting:

	default setting for PMR version only	default setting for dual band version PMR/LPD				
J_POWER1	Short	open	open	Open	Short	Short
J_POWER2	Short	Short	open	Open	Short	open
J_POWER4	Short	Short	Short	Open	Open	open
By menu radio	24CH PMR (500/10mW)	24CH PMR (500/10mW) + 69CH LPD (10mW)	LPD 10mW	LPD = 5W/500mW	24CH PMR (5W/500mW) + 69CH LPD (5W/500mW)	24CH PMR (5W/500mW)
When press PTT button	500/10mW	PMR = 500/10mW LPD = 10mW	always 10mW	5W/500mW	PMR e LPD = 5W/500mW	5W/500mW
When press BOOST button	Always 500mW	PMR = always 500mW LPD = always 10mW	Always 10mW	Always 5W	Always 5W for LPD and PMR	Always 5W

After editing mode to switch LPD turn on the radio, and then hold down the menu for 5 / 6 seconds until the display does not appear LPD channels. To return in PMR, repeat the procedure.